

Exports Rise But Imports Rise Faster As Trade Losses Worsen Again

Goods exports are up 22.2% but imports are up 26.7% sending trade losses up to -\$1.8 Billion per Day

Exports FAS, Imports Customs SITC Industries: (\$ Millions)	----- Yr-to-June 2009 -----			----- Yr-to-June 2010 -----			Change in Balance	
	Exports	Imports	Balance	Exports	Imports	Balance	(\$ Million)	(%)
Totals are Seasonally Adjusted: Industry Figures are Not Adjusted								
Balance of Payment Basis.....	\$509,065	\$743,769	-\$234,704	\$622,178	\$942,382	-\$320,204	-\$85,500	-36.4%
Net Adjustments.....	6,118	6,946	-828	5,870	10,878	-5,008	-4,180	-504.8%
Total Census Basis.....	502,947	736,823	-233,876	616,308	931,504	-315,196	-81,320	-34.8%
Sector Totals Are Corrected for Trans-shipped Re-Exports								
Manufactured Goods.....	\$355,216	\$493,858	-\$138,642	\$423,930	\$599,717	-\$175,787	-\$37,145	-26.8%
Agricultural commodities.....	46,125	35,226	10,899	53,329	39,126	14,203	3,304	30.3%
Mineral fuels.....	23,811	117,118	-93,307	36,562	176,364	-139,802	-46,495	-49.8%
Crude oil.....	\$650	\$80,551	-\$79,901	\$900	\$129,089	-\$128,189	-\$48,288	-60.4%
Television, VCR, etc.....	9,518	53,089	-43,571	10,338	60,358	-50,020	-6,449	-14.8%
ADP equipment; office machines	10,171	38,352	-28,181	10,905	54,857	-43,952	-15,771	-56.0%
Vehicles.....	27,825	51,702	-23,877	43,114	85,074	-41,960	-18,083	-75.7%
Clothing.....	1,420	31,822	-30,402	1,558	34,514	-32,956	-2,554	-8.4%
Electrical machinery.....	29,606	41,561	-11,955	37,355	53,669	-16,314	-4,359	-36.5%
Furniture and bedding.....	1,881	11,989	-10,108	2,300	15,167	-12,867	-2,759	-27.3%
Chemicals - medicinal.....	21,666	27,438	-5,772	21,223	31,642	-10,419	-4,647	-80.5%
Footwear.....	293	8,598	-8,305	332	9,502	-9,170	-865	-10.4%
Toys/games/sporting goods.....	1,918	10,701	-8,783	2,030	11,175	-9,145	-362	-4.1%
Petroleum preparations.....	15,170	23,973	-8,803	23,935	32,744	-8,809	-6	-0.1%
Gem diamonds.....	1,050	5,509	-4,459	1,484	9,078	-7,594	-3,135	-70.3%
Natural gas.....	2,050	8,614	-6,564	2,054	9,396	-7,342	-778	-11.9%
Textile yarn, fabric.....	4,463	8,778	-4,315	5,593	10,565	-4,972	-657	-15.2%
Chemicals - organic.....	12,355	21,147	-8,792	17,563	22,397	-4,834	3,958	45.0%
Fish and preparations.....	1,560	6,183	-4,623	1,677	6,422	-4,745	-122	-2.6%
General industrial mach.....	22,470	25,687	-3,217	24,827	29,099	-4,272	-1,055	-32.8%
Vegetables and fruits.....	6,486	10,136	-3,650	7,239	11,462	-4,223	-573	-15.7%
Metal manufactures, n.e.s.....	7,131	10,597	-3,466	8,378	12,304	-3,926	-460	-13.3%
Iron and steel mill prod.....	5,621	10,907	-5,286	7,864	11,353	-3,489	1,797	34.0%
Power generating mach.....	13,870	17,544	-3,674	16,509	19,921	-3,412	262	7.1%
Travel goods.....	211	3,118	-2,907	219	3,555	-3,336	-429	-14.8%
Aluminum.....	1,964	4,057	-2,093	2,457	5,648	-3,191	-1,098	-52.5%
Plastic articles, n.e.s.....	3,876	6,667	-2,791	4,815	7,771	-2,956	-165	-5.9%
Rubber tires and tubes.....	1,622	3,858	-2,236	2,011	4,814	-2,803	-567	-25.4%
Wood manufactures.....	822	3,024	-2,202	1,055	3,411	-2,356	-154	-7.0%
Basketware, etc.....	4,042	5,596	-1,554	4,175	6,517	-2,342	-788	-50.7%
Copper.....	1,087	2,423	-1,336	1,718	4,023	-2,305	-969	-72.5%
Jewelry.....	2,075	3,667	-1,592	2,255	4,503	-2,248	-656	-41.2%
Lighting, plumbing.....	950	2,894	-1,944	1,173	3,328	-2,155	-211	-10.9%
Alcoholic bev., distilled.....	411	2,194	-1,783	474	2,573	-2,099	-316	-17.7%
Coffee.....	4	1,782	-1,778	3	1,816	-1,813	-35	-2.0%
Chemicals - fertilizers.....	1,872	2,191	-319	1,761	3,400	-1,639	-1,320	-413.8%
Silver and bullion.....	333	980	-647	627	2,049	-1,422	-775	-119.8%
Watches/clocks/parts.....	172	1,295	-1,123	168	1,558	-1,390	-267	-23.8%
Artwork/antiques.....	2,771	2,187	584	1,562	2,933	-1,371	-1,955	-334.8%
Platinum.....	453	1,074	-621	806	1,902	-1,096	-475	-76.5%
Nickel.....	499	780	-281	522	1,468	-946	-665	-236.7%
Optical goods.....	1,275	2,224	-949	1,671	2,616	-945	4	0.4%
Live animals.....	265	1,048	-783	309	1,208	-899	-116	-14.8%
Oils/fats, vegetable.....	864	1,660	-796	1,220	1,835	-615	181	22.7%
Cereal flour.....	1,424	1,887	-463	1,481	2,090	-609	-146	-31.5%
Glassware.....	396	906	-510	478	1,085	-607	-97	-19.0%
Pottery.....	45	511	-466	49	637	-588	-122	-26.2%
Rubber articles, n.e.s.....	756	1,136	-380	988	1,564	-576	-196	-51.6%
Sugar.....	21	365	-344	35	502	-467	-123	-35.8%
Chemicals - inorganic.....	4,753	5,179	-426	5,733	6,194	-461	-35	-8.2%

Exports Rise But Imports Rise Faster As Trade Losses Worsen Again

Goods exports are up 22.2% but imports are up 26.7% sending trade losses up to -\$1.8 Billion per Day

Exports FAS, Imports Customs SITC Industries: (\$ Millions)	----- Yr-to-June 2009 -----			----- Yr-to-June 2010 -----			Change in Balance	
	Exports	Imports	Balance	Exports	Imports	Balance	(\$ Million)	(%)
Records/magnetic media.....	2,005	2,457	-452	2,024	2,309	-285	167	36.9%
Liquified propane/butane.....	496	1,113	-617	1,134	1,362	-228	389	63.0%
Cork, wood, lumber.....	1,691	1,705	-14	2,268	2,315	-47	-33	-235.7%
Spacecraft.....	150	(-)	150	(-)	(-)	0	-150	-100.0%
Paper and paperboard.....	6,081	7,201	-1,120	7,300	7,298	2	1,122	100.2%
Crude fertilizers.....	784	823	-39	1,164	1,061	103	142	364.1%
Metalworking machinery.....	2,139	2,586	-447	2,479	2,360	119	566	126.6%
Cigarettes.....	197	98	99	230	100	130	31	31.3%
Ships, boats.....	962	570	392	1,236	844	392	0	0.0%
Glass.....	1,247	985	262	1,674	1,272	402	140	53.4%
Tobacco, unmanufactured.....	673	472	201	754	343	411	210	104.5%
Printed materials.....	2,634	1,910	724	2,767	2,063	704	-20	-2.8%
Photographic equipment.....	1,516	826	690	1,707	972	735	45	6.5%
Hides and skins.....	603	13	590	953	29	924	334	56.6%
Rice.....	1,215	271	944	1,320	283	1,037	93	9.9%
Chemicals - cosmetics.....	5,147	3,929	1,218	6,062	4,634	1,428	210	17.2%
Mineral fuels, other.....	2,349	1,133	1,216	3,549	1,800	1,749	533	43.8%
Chemicals - dyeing.....	2,468	1,099	1,369	3,514	1,498	2,016	647	47.3%
Pulp and waste paper.....	3,037	1,153	1,884	4,030	1,801	2,229	345	18.3%
Wheat.....	2,676	463	2,213	2,616	327	2,289	76	3.4%
Gold, nonmonetary.....	6,511	3,906	2,605	8,098	5,387	2,711	106	4.1%
Cotton, raw and linters.....	1,797	(-)	1,797	2,900	2	2,898	1,101	61.3%
Coal.....	2,782	908	1,874	4,674	1,043	3,631	1,757	93.8%
Meat and preparations.....	5,660	2,408	3,252	6,204	2,570	3,634	382	11.7%
Scientific instruments.....	18,448	15,016	3,432	21,271	17,315	3,956	524	15.3%
Animal feeds.....	3,627	605	3,022	4,675	615	4,060	1,038	34.3%
Corn.....	4,448	258	4,190	4,787	208	4,579	389	9.3%
Chemicals - n.e.s.....	9,682	4,685	4,997	12,005	5,604	6,401	1,404	28.1%
Soybeans.....	6,668	131	6,537	7,048	130	6,918	381	5.8%
Specialized ind. mach.....	18,507	12,760	5,747	22,464	13,734	8,730	2,983	51.9%
Metal ores; scrap.....	8,538	2,562	5,976	12,865	3,714	9,151	3,175	53.1%
Chemicals - plastics.....	14,758	6,469	8,289	20,683	8,626	12,057	3,768	45.5%
Airplanes, engines, and parts.....	39,761	11,170	28,591	35,788	10,916	24,872	-3,719	-13.0%

US Dept. of Commerce, Bureau of the Census and MBG Information Services

"www.MBGInfoSvcs.com"

US Trade In Autos Complex: \$1.89 of Imports for Each \$1.00 of Exports

Even with sales weak and taxpayer bailout, deficit of -\$10.6 billion in June headed for -\$110 Billion for year.

U.S. Global Auto Trade**GRAND Total: Auto/Truck Trade**

(INCLUDES PARTS)

(\$ Millions) Autos	----- Yr-to-June, 2010 -----			(\$ Millions) Industry Totals	----- Yr-to-June, 2010 -----		
	Exports	Imports	Balance		Exports	Imports	Balance
U.S. TOTAL.....	\$18,425	\$54,317	-\$35,892	U.S. TOTAL.....	\$56,832	\$107,205	-\$50,373
Australia.....	302	3	299	Australia.....	1,084	74	1,010
Austria.....	8	155	-147	Austria.....	105	428	-323
Belgium.....	57	310	-253	Belgium.....	301	395	-94
Brazil.....	86	(-)	86	Brazil.....	577	564	13
Canada.....	5,864	18,127	-12,263	Canada.....	26,194	26,379	-185
Germany.....	1,681	7,512	-5,831	Germany.....	2,495	10,578	-8,083
Japan.....	169	14,950	-14,781	Japan.....	796	21,458	-20,662
Korea.....	181	3,008	-2,827	Korea.....	404	5,394	-4,990
Mexico.....	1,278	6,927	-5,649	Mexico.....	9,861	27,982	-18,121
Saudia Arabia...	1,566	(-)	1,566	Saudia Arabia...	1,789	2	1,787
Sweden.....	49	481	-432	Sweden.....	168	618	-450
Taiwan.....	94	9	85	Taiwan.....	131	1,044	-913
United Kingdom	348	1,316	-968	United Kingdom	817	1,751	-934
Other.....	6,740	1,519	5,221	Other.....	12,109	10,537	1,572

U.S. Global Trucks/Buses Trade**U.S. Global Trade in Auto Parts**

(\$ Millions) Trucks	----- Yr-to-June, 2010 -----			(\$ Millions) Parts	----- Yr-to-June, 2010 -----		
	Exports	Imports	Balance		Exports	Imports	Balance
U.S. TOTAL.....	\$9,467	\$7,494	\$1,973	U.S. TOTAL.....	\$28,940	\$45,393	-\$16,453
Australia.....	355	4	351	Australia.....	427	68	359
Austria.....	1	1	0	Austria.....	96	272	-176
Belgium.....	13	40	-27	Belgium.....	231	45	186
Brazil.....	89	6	83	Brazil.....	402	557	-155
Canada.....	6,693	513	6,180	Canada.....	13,637	7,739	5,898
Germany.....	46	40	6	Germany.....	769	3,025	-2,256
Japan.....	22	173	-151	Japan.....	605	6,335	-5,730
Korea.....	14	(-)	14	Korea.....	208	2,385	-2,177
Mexico.....	295	6,526	-6,231	Mexico.....	8,287	14,529	-6,242
Saudia Arabia...	81	(-)	81	Saudia Arabia...	142	2	140
Sweden.....	7	39	-32	Sweden.....	112	97	15
Taiwan.....	4	1	3	Taiwan.....	33	1,033	-1,000
United Kingdom	45	55	-10	United Kingdom	424	380	44
Other.....	1,803	95	1,708	Other.....	3,567	8,923	-5,356

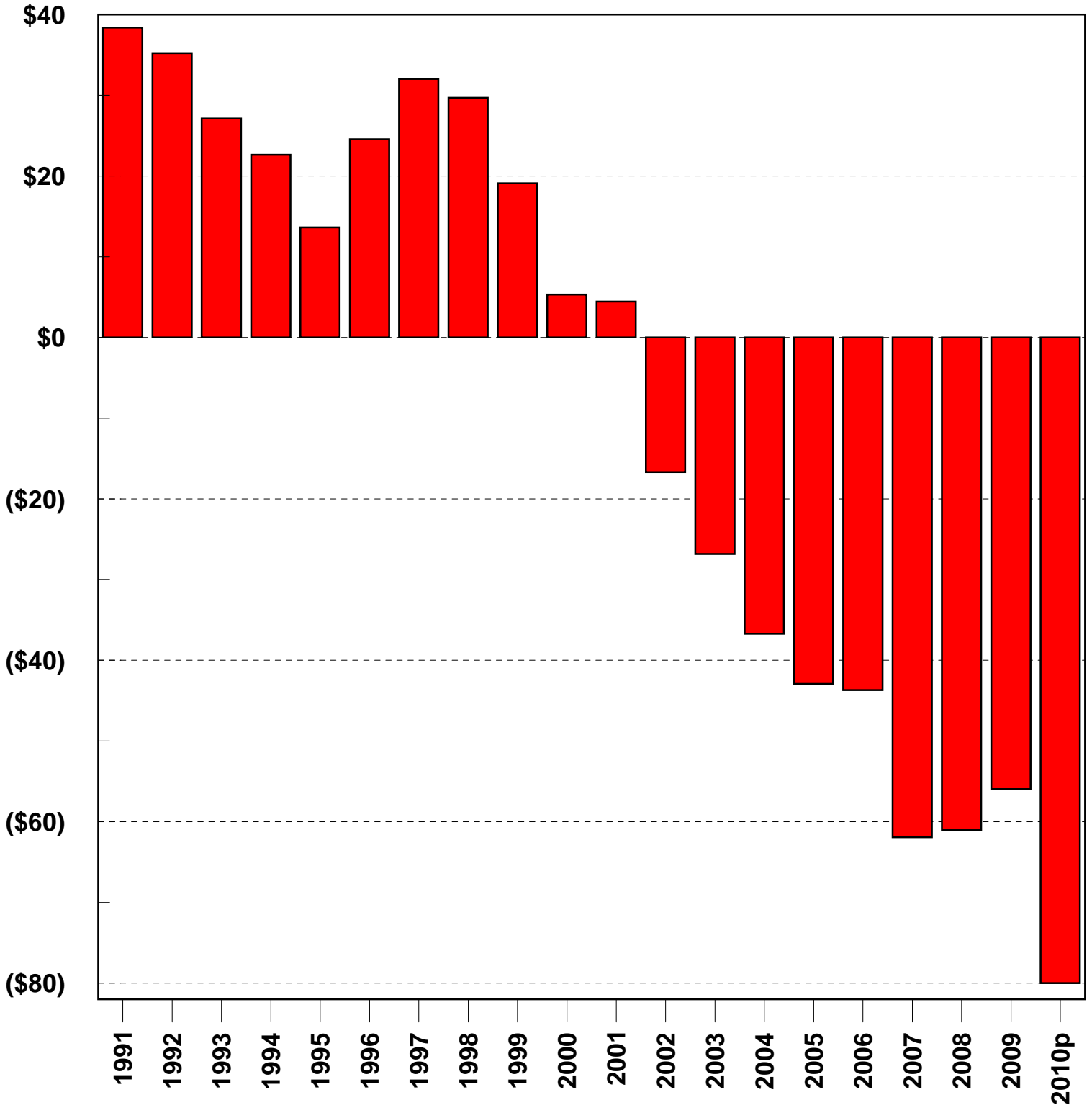
Data released August 11, 2010

U.S. Department of Commerce, Bureau of the Census and MBG Information Services

"cwm@MBGInfoSvc.com"

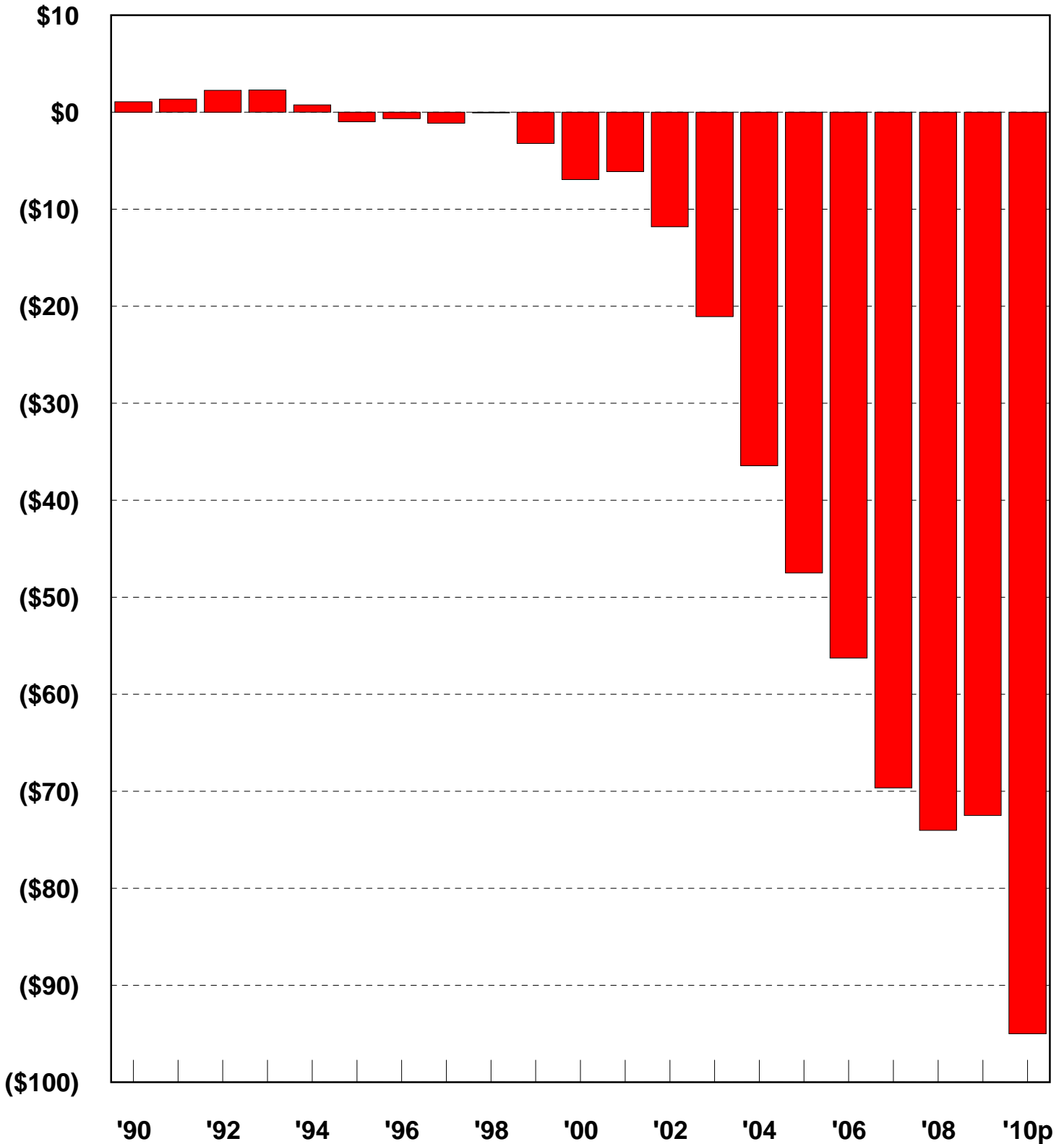
US Trade in Advanced Technology Goods

\$ Billion: Annual US Global Trade Balance in ATP



US Advanced Tech Trade With China

\$ Billion US ATP Trade Balance With China



-\$5.85 Trillion in US Global Losses/Borrowing In Decade

\$ Billion: US Quarterly Balances in All Global Current Accounts

